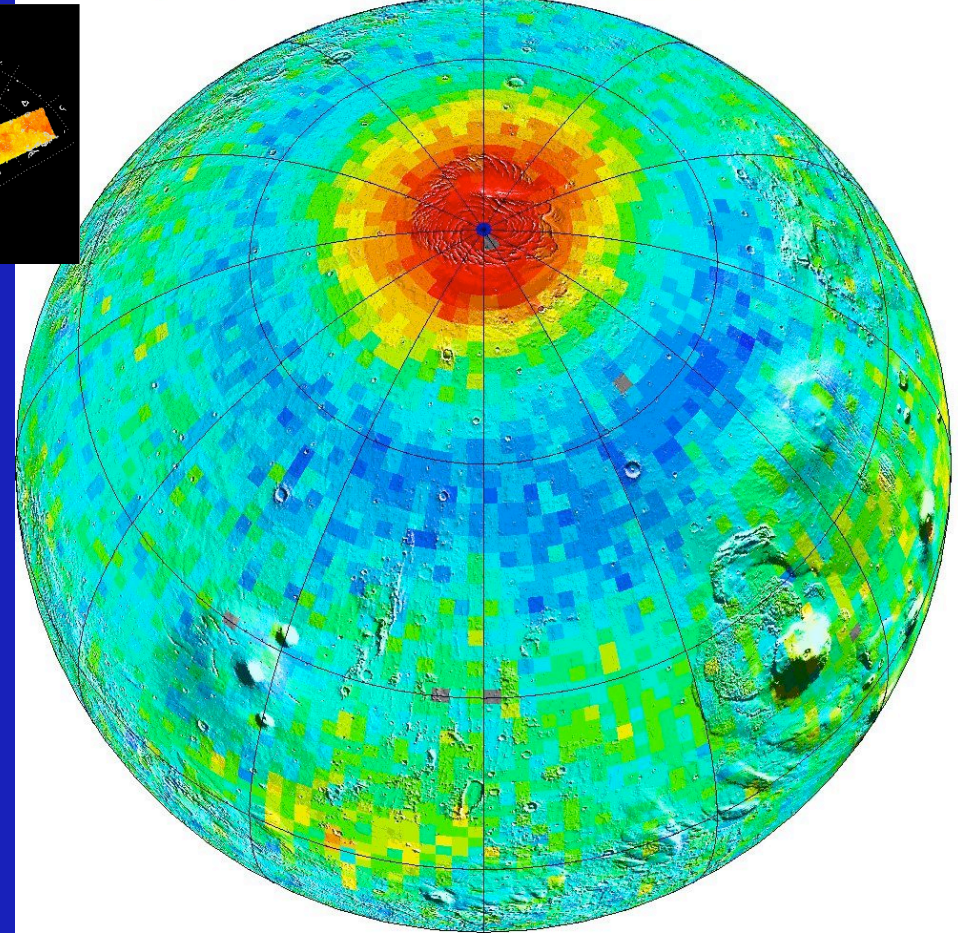
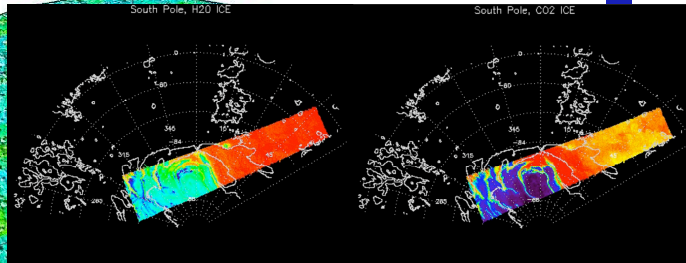
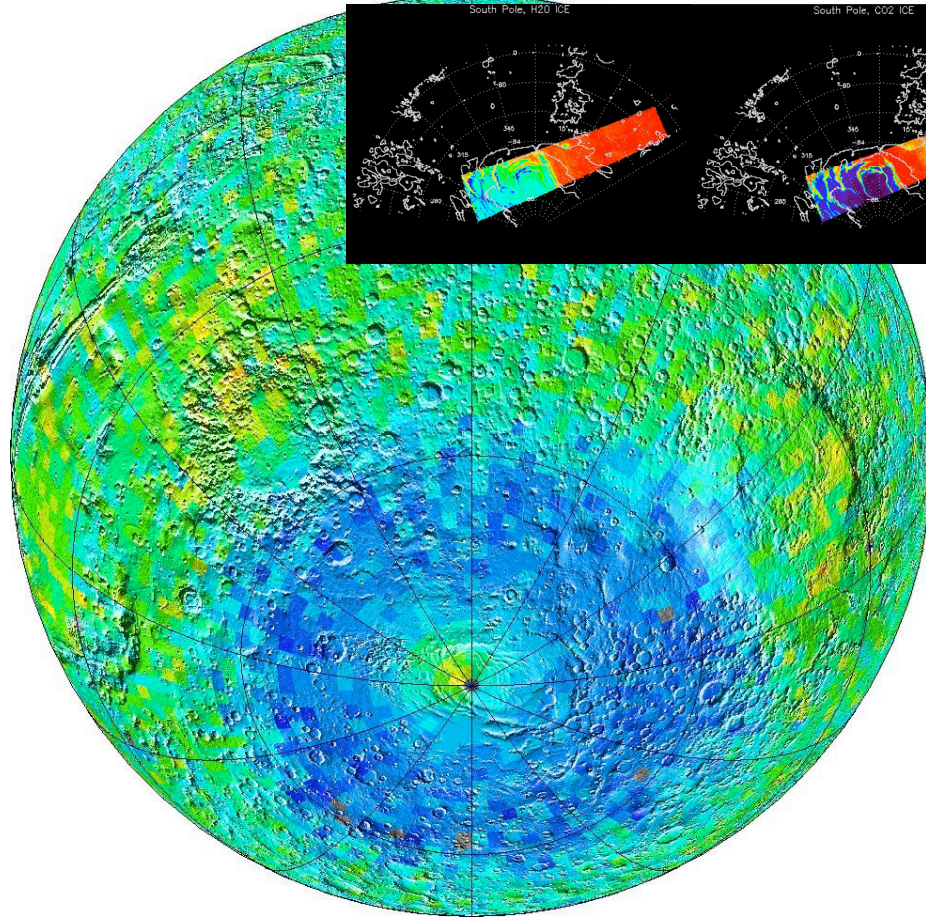


# Eau et glace de surface...

Glace d'eau Pas de glace Glace carbonique

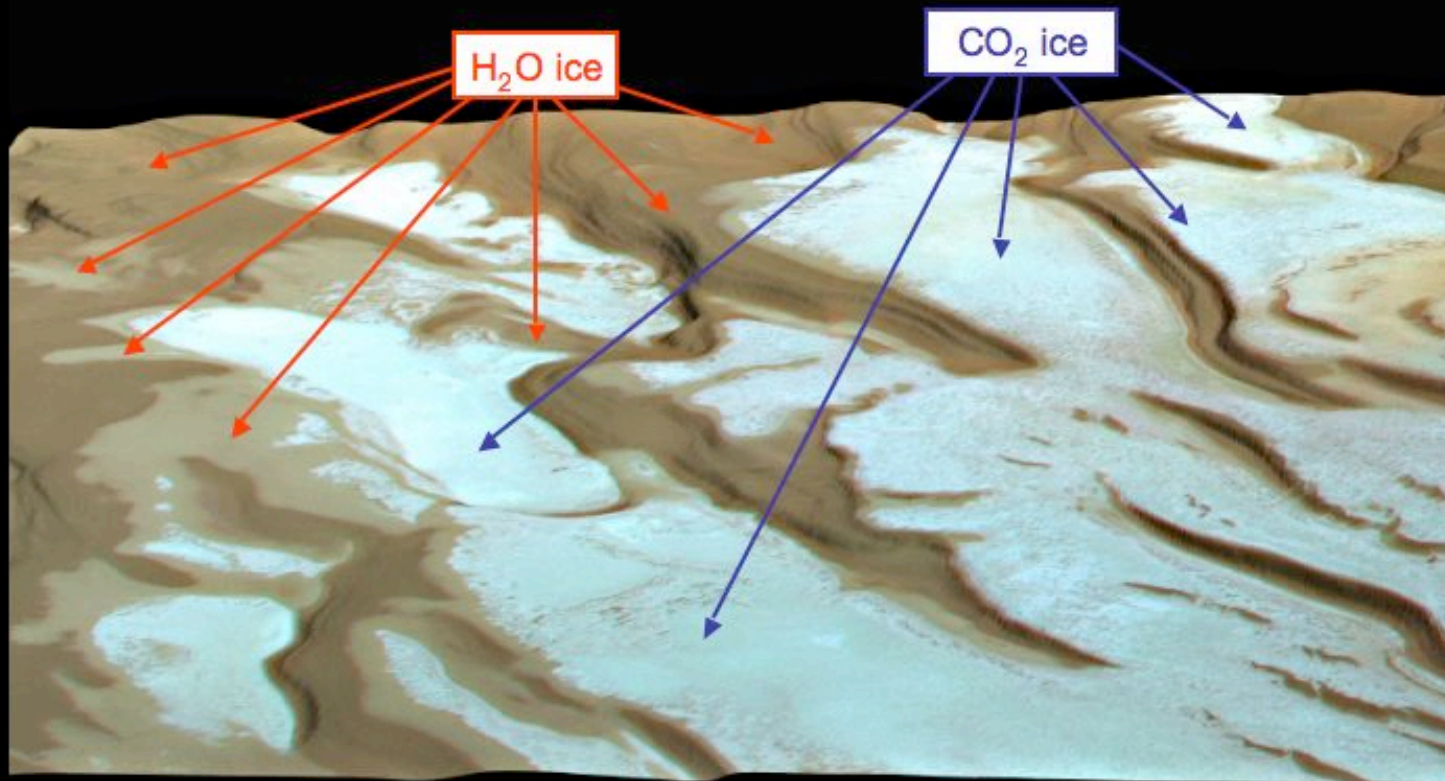


Glace d'eau Pas de glace Glace carbonique





OMEGA composition / HRSC 3D imaging

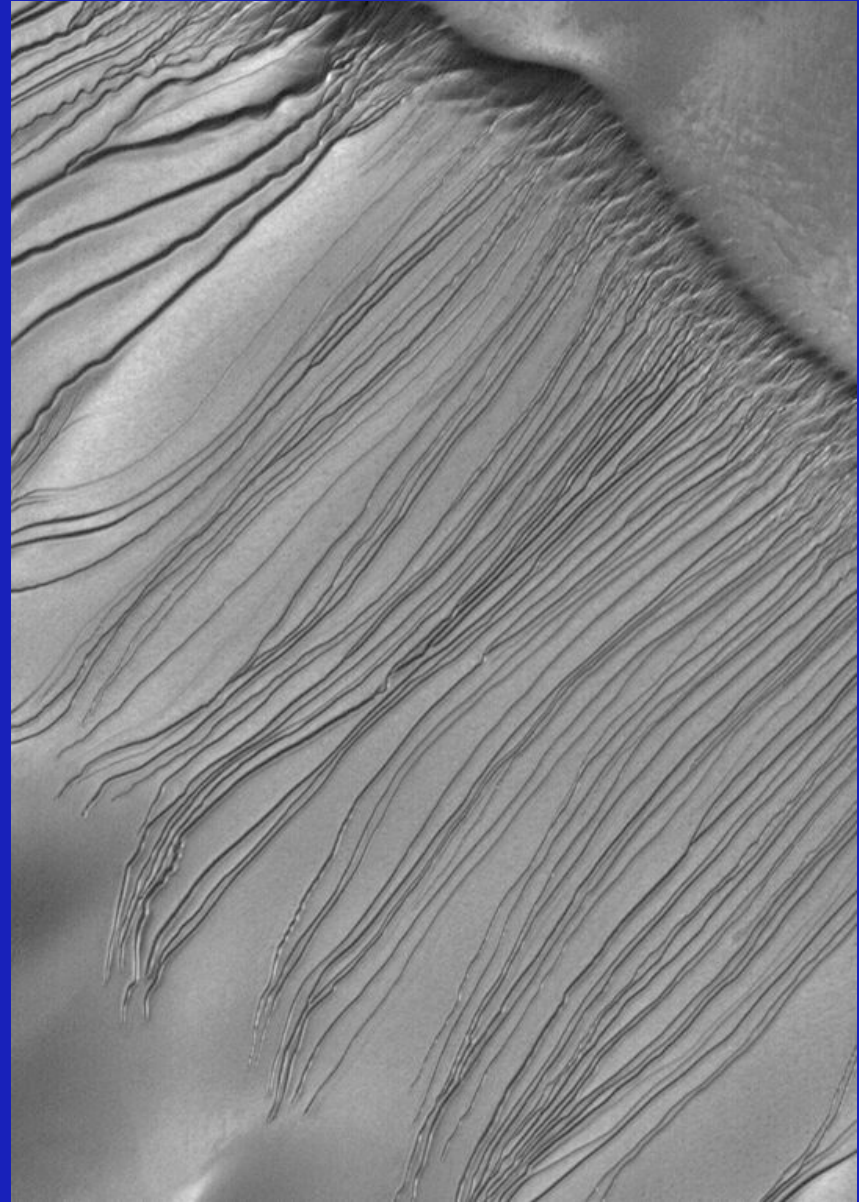
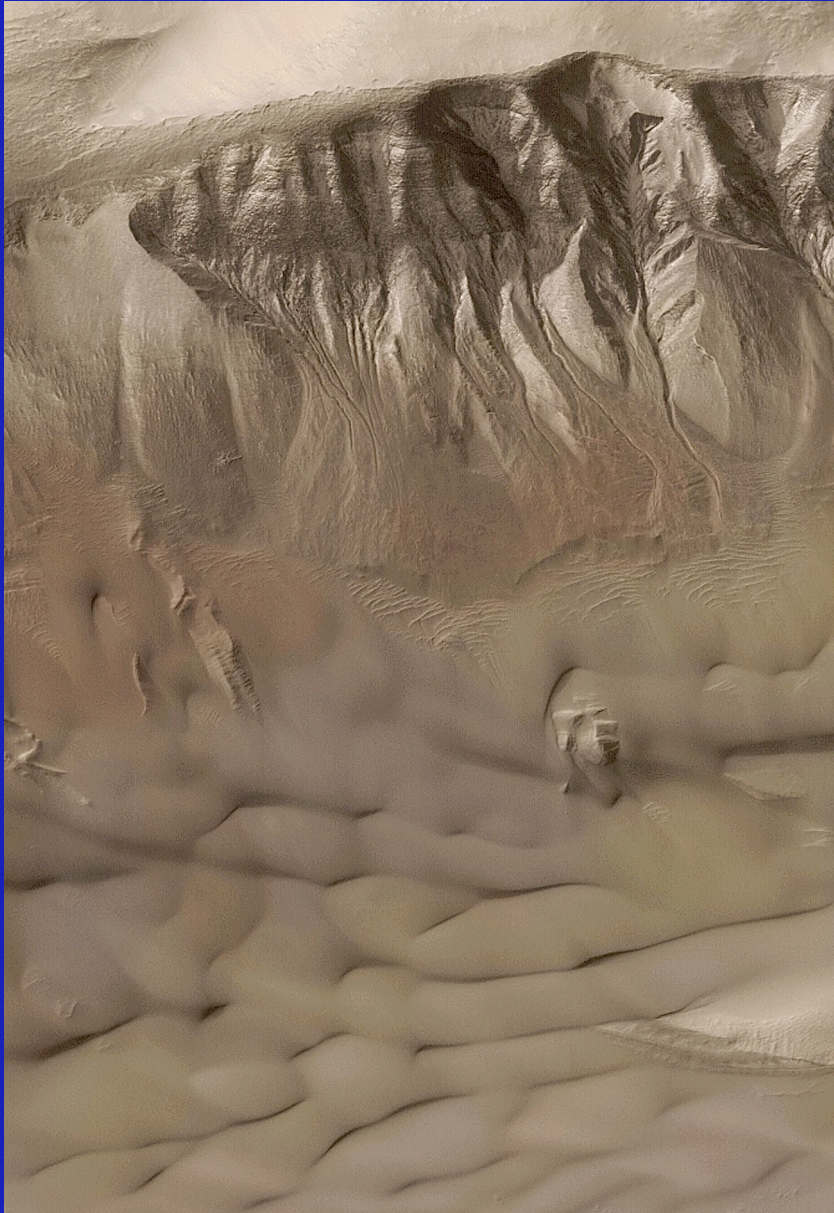


Permanent southern polar cap

OMEGA maps, © IAS  
HRSC image by courtesy of G.



# Les coulées d'eau aujourd'hui?

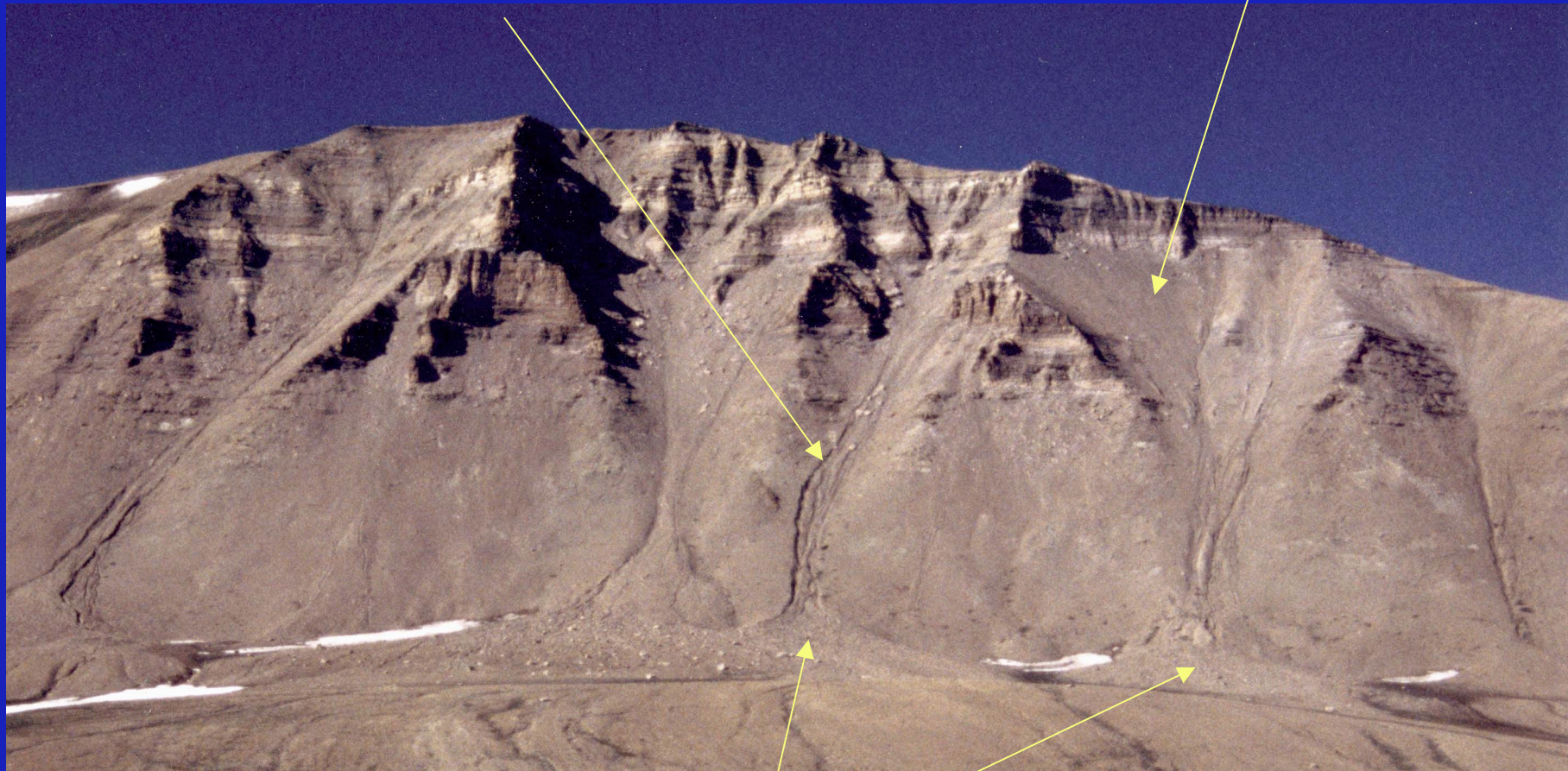




# Analogie Terre/Mars : L'exemple du Groënland

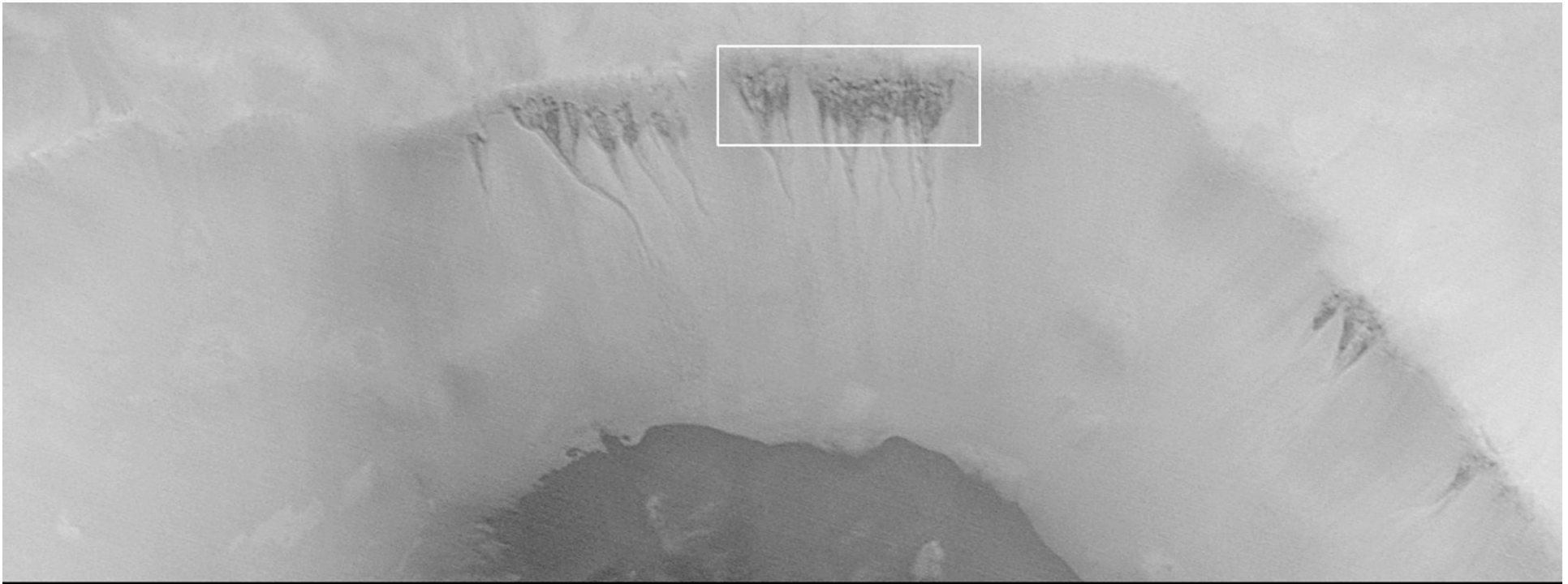
Transport avec levées latérales

Zone départ

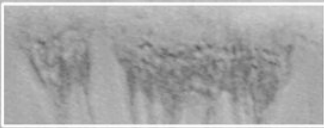
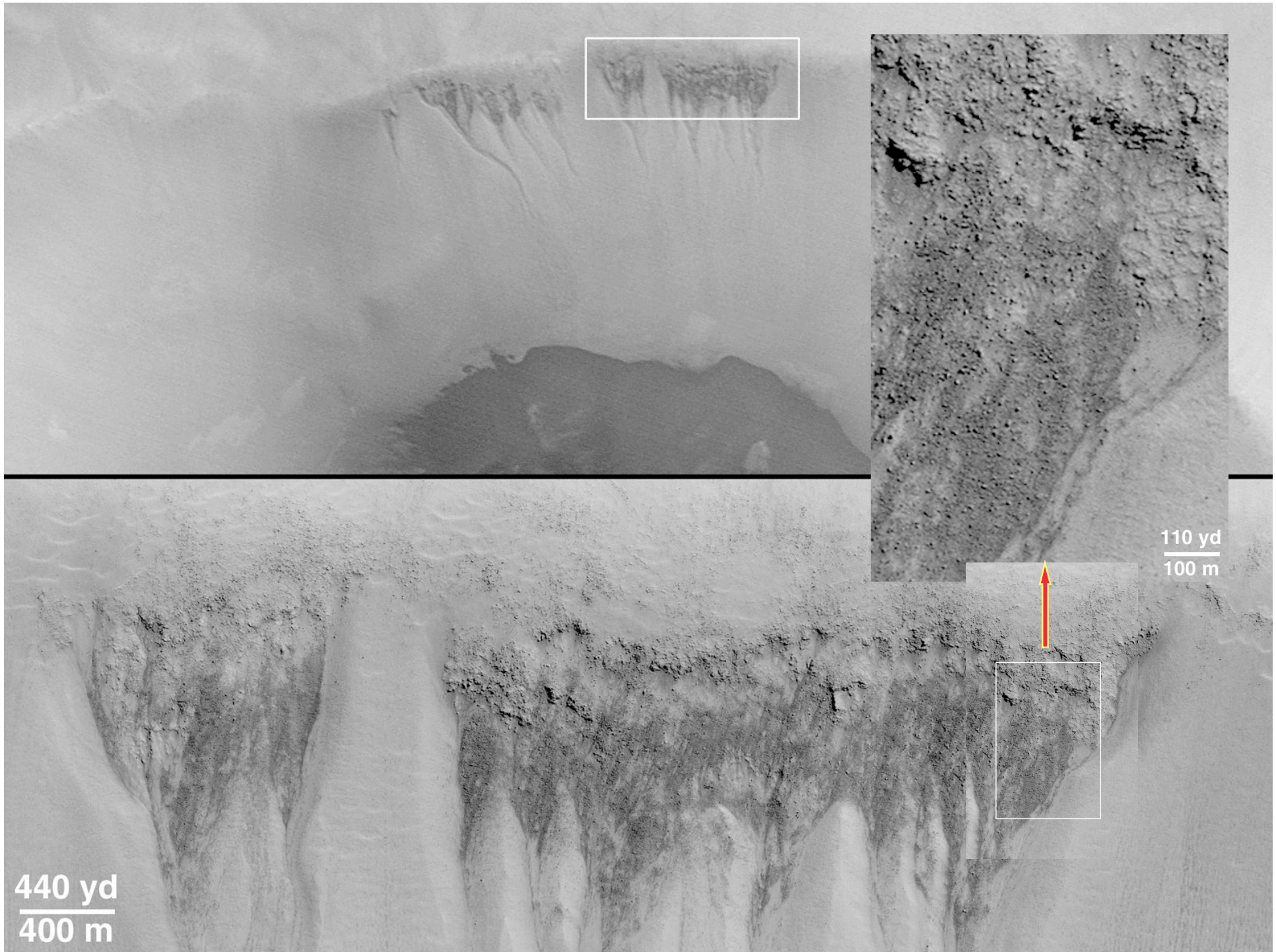


Cônes d'accumulation

Absence de sources

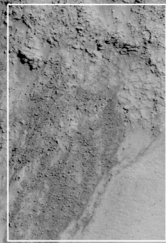






110 yd  
100 m

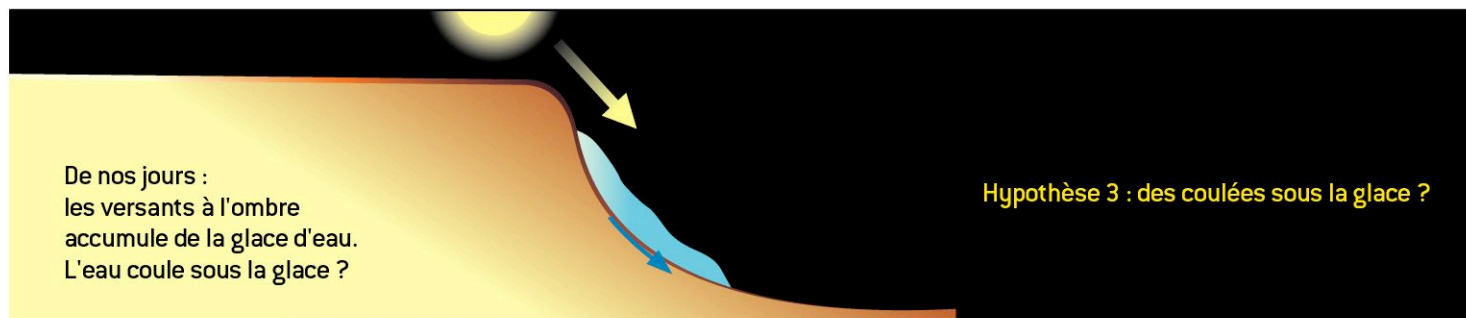
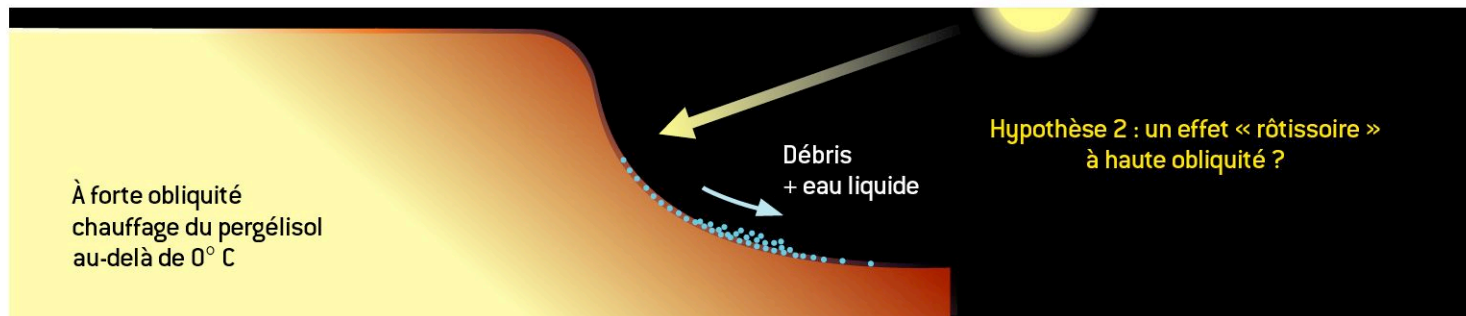
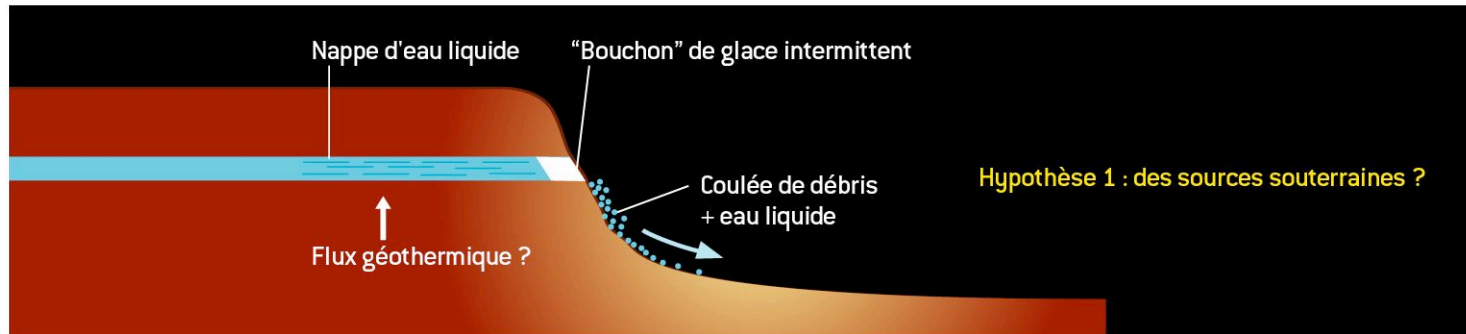
440 yd  
400 m







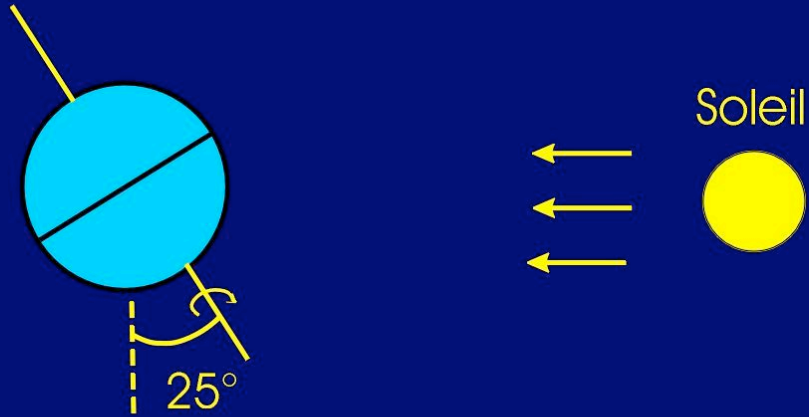
# Les coulées d'eau...



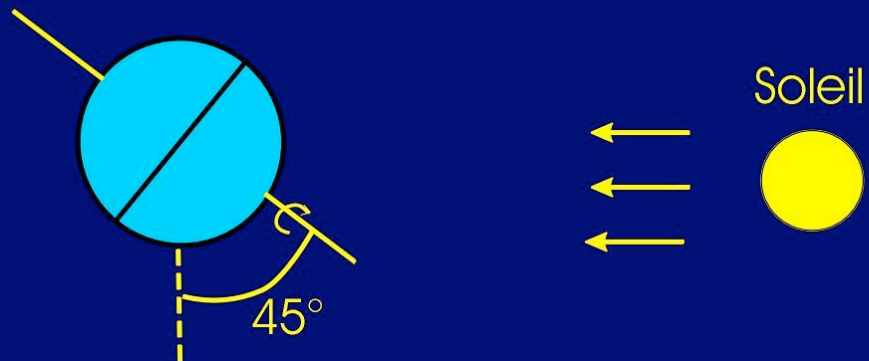


## Position de Mars par rapport au soleil au solstice d'été dans l'hémisphère sud

Obliquité 25 ° (actuellement)



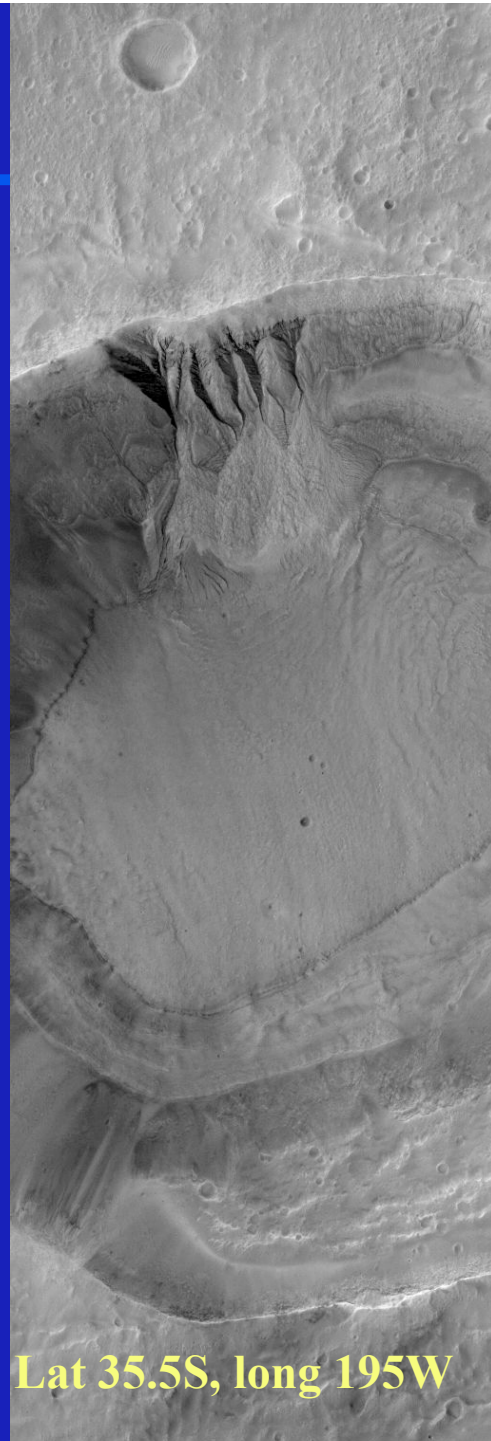
Obliquité 45 °



Conséquence: été plus chaud / hiver plus froid



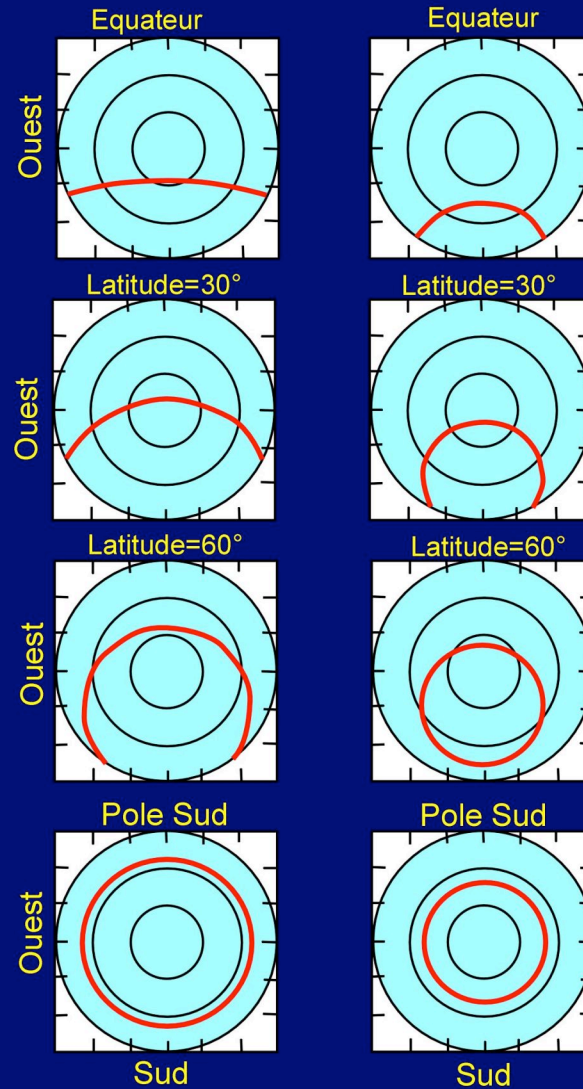
## Position du soleil dans le ciel au solstice d'été dans l'hémisphère Sud



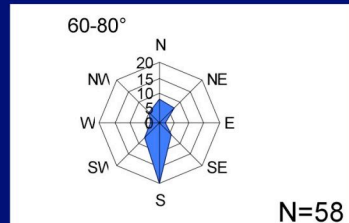
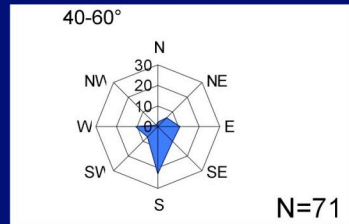
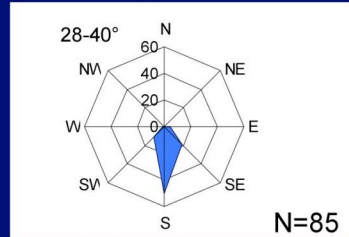
Lat 35.5S, long 195W

Obliquité 25 °

Obliquité 45 °

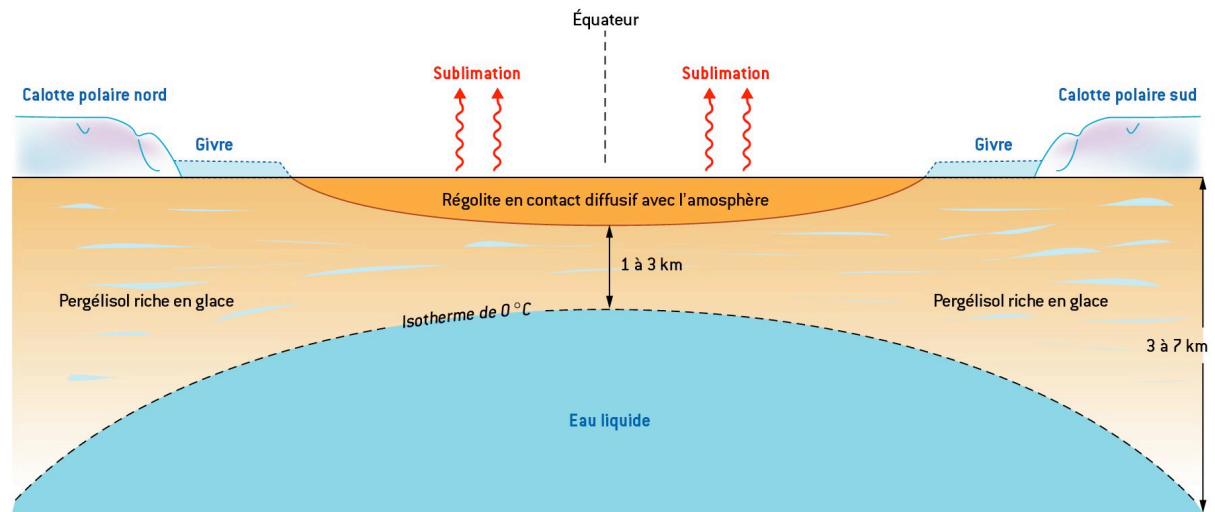
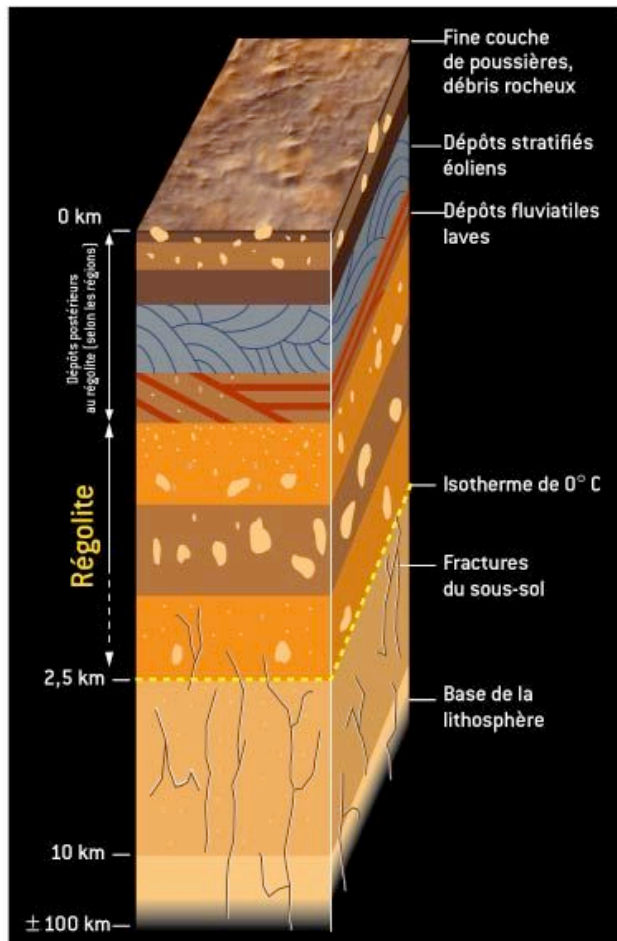


Pas d'écoulements





# L'eau aujourd'hui....



- des ressources à découvrir?  
À cartographier ?  
... de la place pour de futures missions...



# Epilogue... et la vie?

